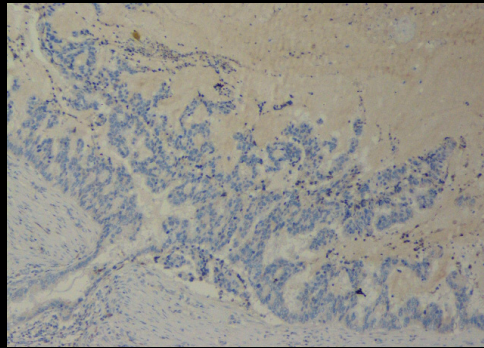
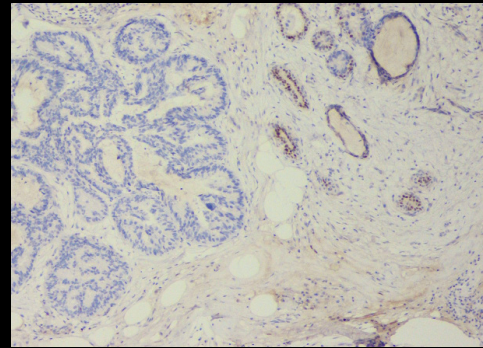


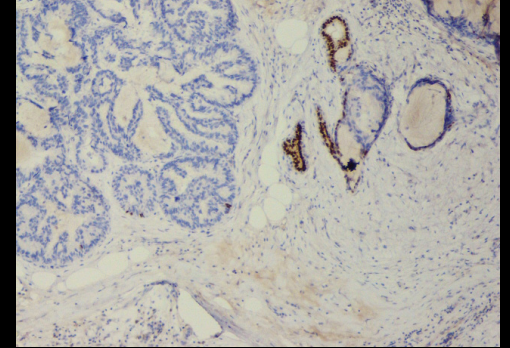
CK20



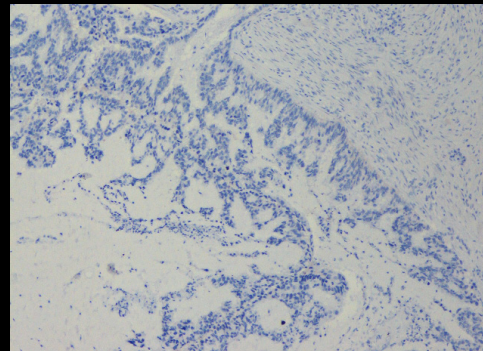
GATA3



ER



PR



HER2

HISTOPATHOLOGICAL FINDINGS:

Grossly, the mass measured 4.3x3x2.5 cm. The external surface was grey-white, mucinous. The entire cut-surface showed grey-white, solid lesion with mucinous areas (Figure 1) The histopathological examination revealed a malignant tumor in breast parenchyma arranged in the form of cystic spaces lined by tall columnar cells showing nuclear stratification, tufting and papillary formations. The tumor cells exhibit moderate pleomorphism having basally placed vesicular nuclei, prominent nucleoli and abundant cytoplasm with intra-cytoplasmic mucin. Mucin was also noted within the cystic spaces. Foci of in-situ carcinoma were noted (Figures 2-3).